

FC122

Version : A.002
Issue Date : 2009/07/17
File Name : SP-FC122-A.002.doc
Total Pages: 10

Fan Speed Control IC



新竹市科學園區展業一路9號7樓之1

SILICON TOUCH TECHNOLOGY INC.

9-7F-1, Prosperity Road I, Science Based Industrial Park,
Hsin-Chu, Taiwan 300, R.O.C.

Tel : 886-3-5645656 Fax : 886-3-5645626

FC122

Fan Speed Control IC

General Description

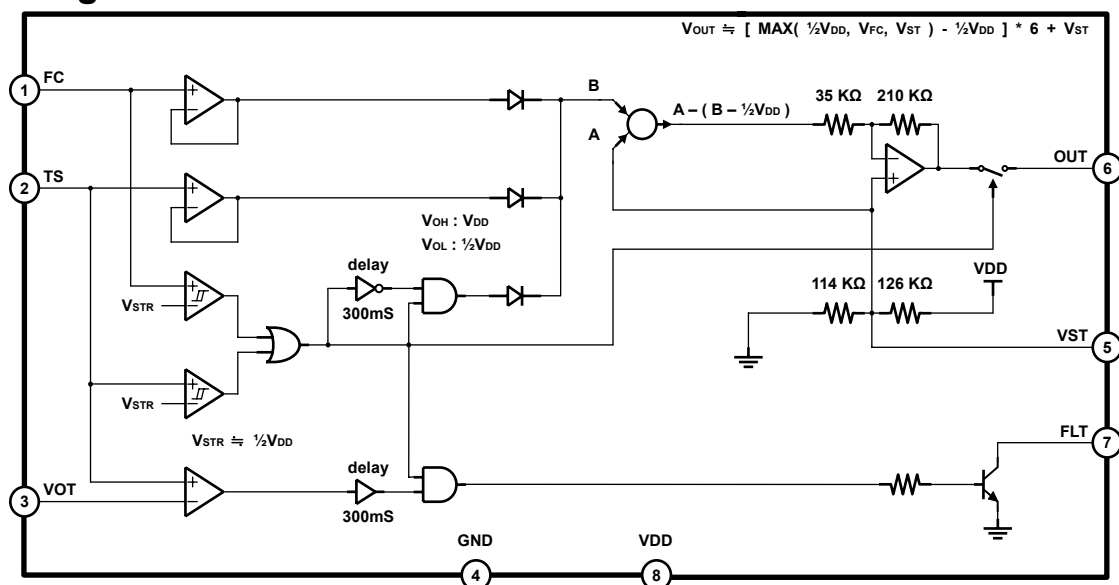
The FC122 is a linear fan-speed-control IC designed for power supply. It is a flexible solution to fan speed control according to the NLX/ATX/PS98 fan speed control specification.

The FC122 incorporate one linear fan-speed-control input, and one temperature sensor input for fan-speed-control and monitoring ambient status. Additional output is provided to report if temperature fault is sensed.

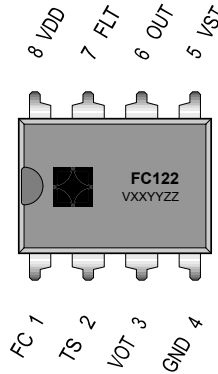
Features

- Linear fan speed control for high reliable power supply use
- NLX/ATX/PS98 fan control compliant
- Low power consumption
- Adjustable I/O voltage mapping for wide range of application design
- Auto-started fan driving for over temperature protection
- Fault output provided for easy programming control
- Low pin count 8-pin DIP package

Block Diagram



Pin Description



Pin No.	Pin Name	Signal Type	Description
1	FC	Analog Input	Fan speed control input
2	TS	Analog Input	Sensing voltage from an external thermistor
3	VOT	Analog Input	Reference voltage for over-temperature detection
4	GND	Ground	Ground
5	VST	Analog Input	Fan start voltage
6	OUT	Analog Output	Output voltage
7	FLT	Digital Output	Open-collector output for over-temperature fault
8	VDD	Power	Supply voltage

Absolute Maximum Ratings (Unless otherwise noted, $T_A = 25\text{ }^\circ\text{C}$)

Parameter	Rating
Supply Voltage (V_{DD})	< +16.0 V
Input Voltage Range (V_I)	- 0.3 V to $V_{DD} + 0.3$ V
Output Voltage Range (V_O)	- 0.3 V to $V_{DD} + 0.3$ V
Junction Temperature (T_J)	< 150 $^\circ\text{C}$
Operating Temperature (T_{opr})	0 $^\circ\text{C}$ to + 70 $^\circ\text{C}$
Storage Temperature (T_{stg})	- 55 $^\circ\text{C}$ to + 150 $^\circ\text{C}$
ESD Susceptibility (ESD)	> 2000 V

Electrical Characteristics (T_A= 25°C, V_{DD}= 12V)

Parameter	Symbol	Conditions	MIN	TYP	MAX	Unit
Power Supply						
Supply Voltage	V _{DD}		11.4	12	12.6	V
Supply Current	I _{DD}				2	mA

Parameter	Symbol	Conditions	MIN	TYP	MAX	Unit
Analog Input (FC)						
Start Voltage ($\approx \frac{1}{2}V_{DD}$)	V _{STR (FC)}		6.03	6.1	6.17	V
Hysteresis	V _{HYST (FC)}		50	100	150	mV

Parameter	Symbol	Conditions	MIN	TYP	MAX	Unit
Analog Input (TS)						
Start Voltage ($\approx \frac{1}{2}V_{DD}$)	V _{STR (TS)}		6.03	6.1	6.17	V
Hysteresis	V _{HYST (TS)}		250	300	350	mV

Parameter	Symbol	Conditions	MIN	TYP	MAX	Unit
Analog Input (VOT)						
Input Voltage ($< V_{DD} - 2.0V$)	V _{VOT}		6.0		10.0	V

Parameter	Symbol	Conditions	MIN	TYP	MAX	Unit
Analog Input (VST)						
Resistance to V _{DD}	R _{DD}			126		KΩ
Resistance to V _{SS}	R _{SS}			114		KΩ
Input Voltage ($< V_{DD} - 2.0V$)	V _{ST}		1.0		10.0	V

Parameter	Symbol	Conditions	MIN	TYP	MAX	Unit
Analog Output (OUT)						
Start Interval	T _{START}		240	300	360	mS
Source Current	I _{OUT}				5	mA
Gain	A _{OUT}	V _{ST} = 5.7 V		6		

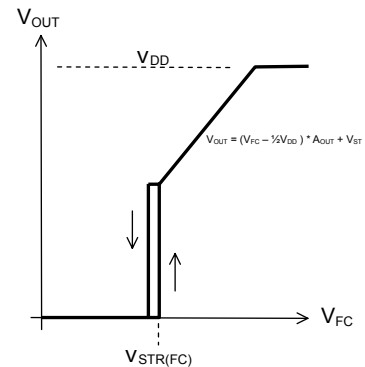
Parameter	Symbol	Conditions	MIN	TYP	MAX	Unit
Open Collector Digital Outputs (FLT)						
Delay Time	T _{FLT}		240	300	360	mS
Output Low Voltage	V _{OL}	I _{OL} = 1 mA			0.4	V

Functional Description

1. Fan Speed Control:

The output voltage (V_{OUT}) can be controlled by fan control input (V_{FC}).

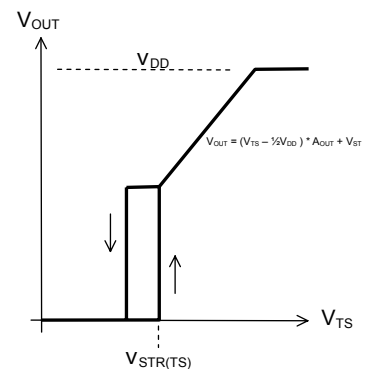
$$V_{FC} \geq V_{STR(FC)} : V_{OUT} = (V_{FC} - \frac{1}{2}V_{DD}) * A_{OUT} + V_{ST}$$



2. Temperature Protection:

Pin-TS connects to an external thermistor network for monitoring ambient temperature. The input signal (V_{TS}) will decide the minimum output voltage (V_{OUT}).

$$V_{TS} \geq V_{STR(TS)} : V_{OUT} = (V_{TS} - \frac{1}{2}V_{DD}) * A_{OUT} + V_{ST}$$



3. Drive output:

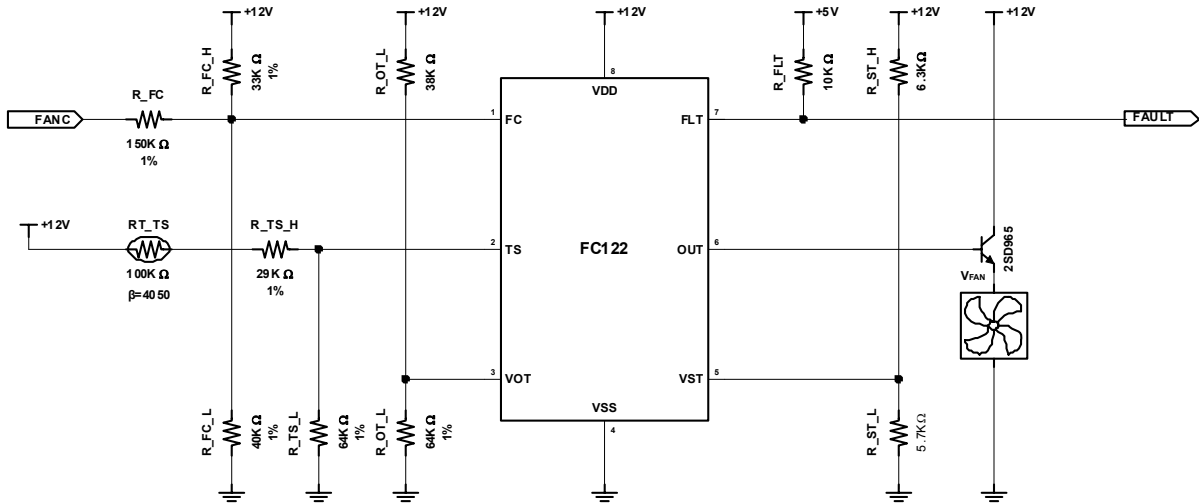
Whenever the fan is started from the off state, it will induce an start-up interval of 0.3 sec, the Pin-OUT will drive full duty in this period and then continue with the voltage determined by MAX (V_{FC} , V_{TS}).

4. Fault output:

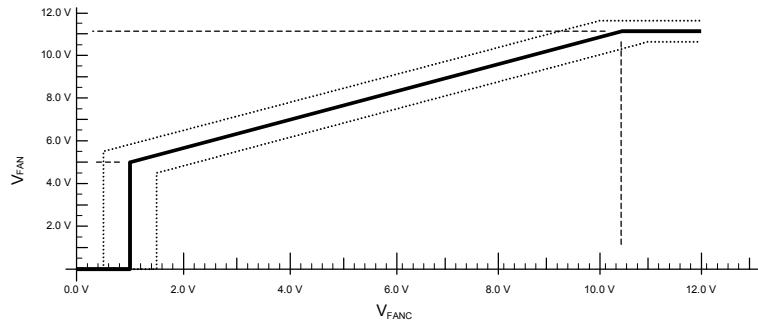
Pin-FLT is an open collector, and active low signal. It will be pulled to low to indicate that over-temperature has occurred.

Over-temperature: When V_{TS} exceed V_{VOT} .

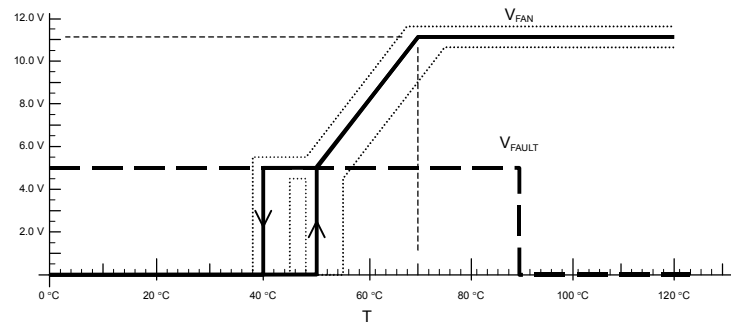
Typical Applications



1. Fan speed control:



2. Temperature protection:



Application Notes

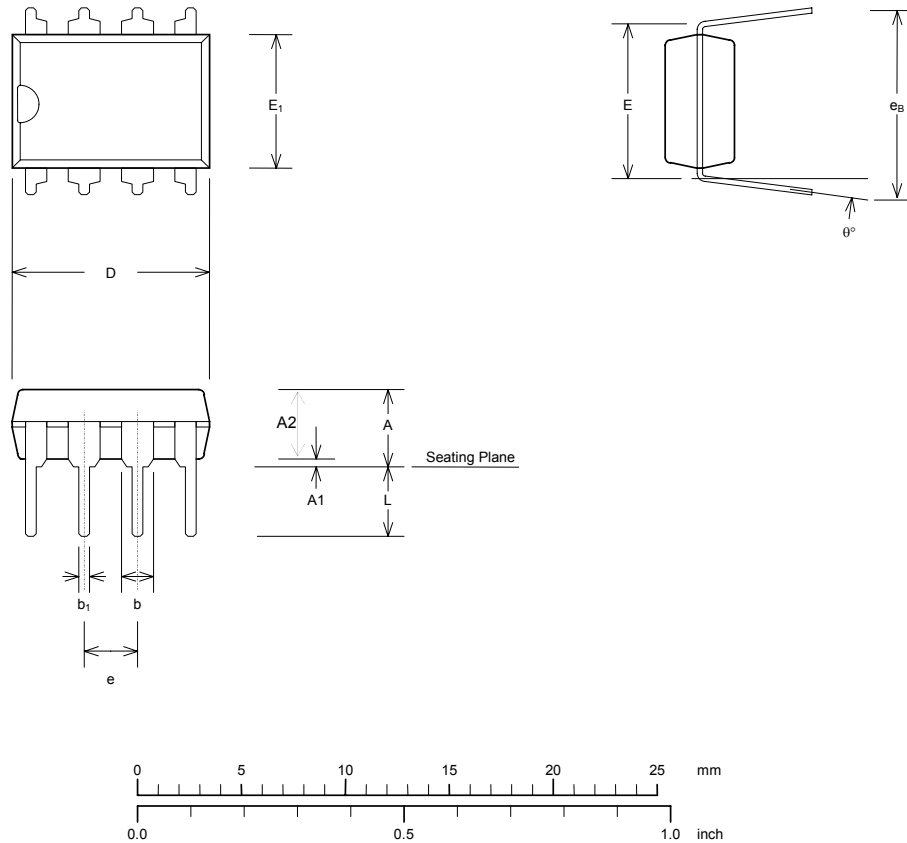
- About the pins that are unnecessary in certain cases:

FC122 provides a highly flexible solution to fan speed control. But in some cases only parts of its functions are needed. When this occurs please refer to the following table to see what to do with these unnecessary pins.

<i>Pin #</i>	<i>Name</i>	<i>Description</i>	<i>What to do</i>
1	FC	Fan speed control input	Grounding
2	TS	Sensing voltage at thermistor	Grounding
3	VOT	Reference voltage for Over-temperature detecting	VDD
7	FLT	Fault open collector output	floating

Package Specification

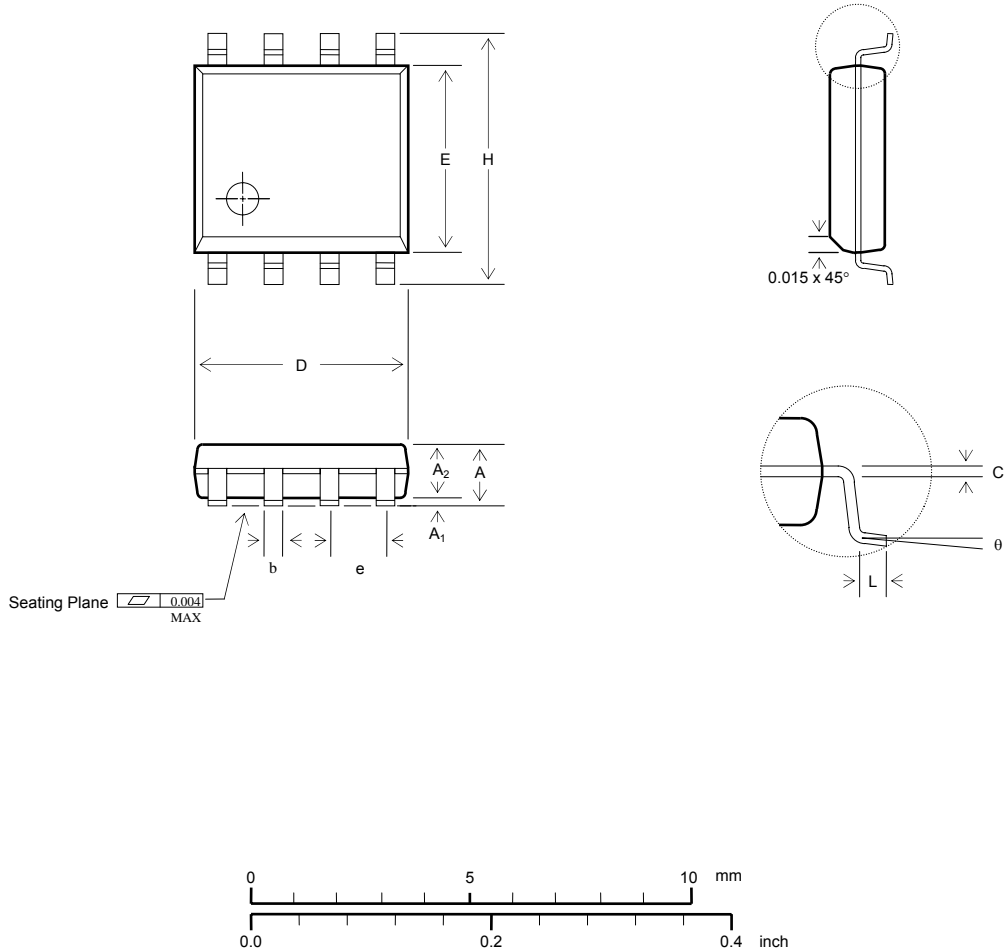
(8-pin DIP)



Symbol	Dimension in mm			Dimension in inch			NOTE
	Min	Normal	Max	Min	Normal	Max	
A			5.334			0.210	
A ₁	0.381			0.015			
A ₂	3.175	3.302	3.429	0.125	0.13	0.135	
b		1.524			0.06		
b ₁		0.457			0.018		
D	9.017	9.271	10.160	0.355	0.365	0.4	
E	7.366	7.620	7.874	0.290	0.300	0.310	
E ₁	6.223	6.376	6.528	0.245	0.251	0.257	
e		2.540			0.100		
e _B	8.509	9.017	9.525	0.335	0.355	0.375	
L	2.921	3.302	3.810	0.115	0.13	0.150	
θ°	0	7	15	0	7	15	

Package Specification (Continued)

(8-pin SOP)



Symbol	Dimension in mm			Dimension in inch			NOTE
	Min	Normal	Max	Min	Normal	Max	
A	1.346		1.753	0.053		0.069	
A ₁	0.102		0.254	0.004		0.010	
A ₂	1.346		1.499	0.053		0.059	
b		0.406				0.016	
c		0.203				0.008	
D	4.801		4.978	0.189		0.196	
E	3.810		3.988	0.150		0.157	
e		1.270				0.050	
H	5.791		6.198	0.228		0.244	
L	0.406		1.270	0.016		0.050	
θ°	0		8	0		8	

The products listed herein are designed for ordinary electronic applications, such as electrical appliances, audio-visual equipment, communications devices and so on. Hence, it is advisable that the devices should not be used in medical instruments, surgical implants, aerospace machinery, nuclear power control systems, disaster/crime-prevention equipment and the like. Misusing those products may directly or indirectly endanger human life, or cause injury and property loss.

Silicon Touch Technology, Inc. will not take any responsibilities regarding the misuse of the products mentioned above. Anyone who purchases any products described herein with the above-mentioned intention or with such misused applications should accept full responsibility and indemnify. Silicon Touch Technology, Inc. and its distributors and all their officers and employees shall defend jointly and severally against any and all claims and litigation and all damages, cost and expenses associated with such intention and manipulation.

Silicon Touch Technology, Inc. reserve the right to make changes to their products or to discontinue any product or service without notice, and advise customers to obtain the latest version of relevant information to verify, before placing orders, that information being relied on is current and complete.